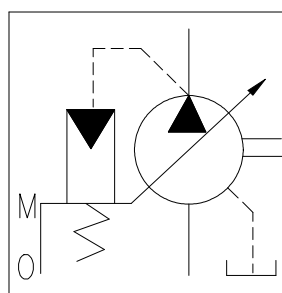


RV20-SERIES

These are variable displacement single vane pumps. They come with inbuilt pressure compensator and flow cut off, which in turn give good power saving.



Graphical symbol



Ratings

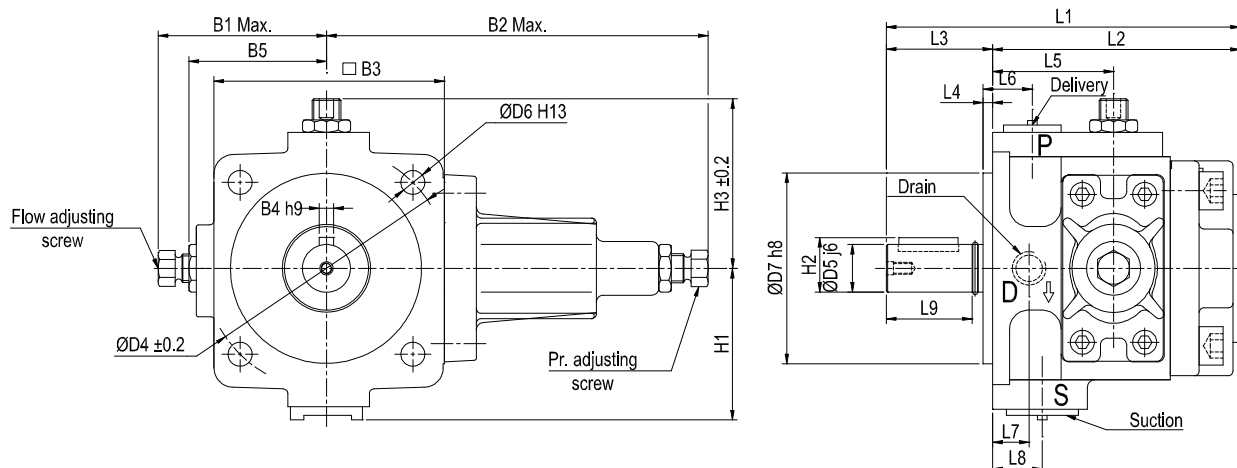
Model number	Capacity cc/rev	Pr. adj. range Kgf/cm ²	Shaft speed range rpm		Max. operating pressure Kgf/cm ²	Max. drain at max. pr. L/min	Mass Kg
			Min	Max			
RV20-SF-14.5-C-10	10	10~50	800	1800	50	1.7	6.7

Model Number Designation

RV20	-S	F	-14.5	-C	-10
Series number	Number of stage	Type of mounting	Delivery at unloading l/min. at 1450 rpm	Max. operating pressure Kgf / cm ²	Design Number
RV20	S: Single Stage	F: Flange Type	14.5	C: 50	10

RV20-SF-14.5-C-10

B



Size	B1 Max.	B2 Max.	□ B3	B4	B5	P	S	D	ØD4±0.2	ØD5 j6	D6 H13	D7 H8	H1±0.2	H2	H3
20	70	160	115	6	57	G 3/8"	G 1/2"	PT 1/4"	102	20	10	80	63.5	23	71

Size	L1	L2	L3	L4	L5	L6	L7	L8	L9
20	149	104	45	4	50	20.5	15	20.5	36

SEAL KIT DETAILS:

Model Code: KS-RV20

Sl.No	Name of Part	Part number	Qty.
1	'O' Ring	SO-NA-P10A	1
2	'O' Ring	SO-NA-P7	2
3	'O' Ring	SO-NA-A146	1
4	Back up ring	SO-BB-P10A	1
5	Back up ring	SO-BB-P7	2
6	Oil seal	ISD-20357	1



VARIABLE DISPLACEMENT VANE PUMP

Typical pump characteristics at viscosity 20 cSt (100 SUS) [ISO VG32, 50°C]

B

