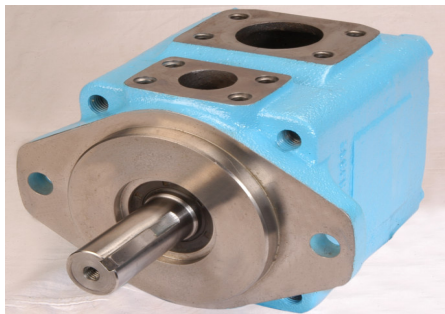


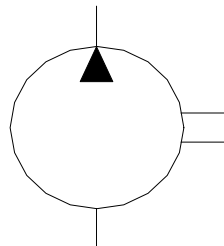


□ HPV3 SERIES – HIGH PRESSURE HIGH SPEED SINGLE PUMPS

These HPV pumps are designed for high-pressure applications. Suitable for mobile applications like Drill rigs, Railways & Construction Equipments.



Graphical Symbol



B

□ Ratings

Model Number	Geometric Displacement cm ³ /rev	Max. Oper. Pressure Kgf/cm ²	Output Flow and Input Power	Shaft Speed Range RPM		Mass (Approx) kg.	
				Max.	Min.	Flange Mounting	Foot Mounting
HPV3-120	120.6	240	Refer Page 3	2300	800	26.0	36.0
HPV3-145	145.7						

□ Model Number Designation

HPV3	-120	-L	-R	A	A	-K1	-10
Series Number	Nominal Displacement	Type of Mounting	Shaft Rotation	Discharge Position	Suction Port Position	Shaft	Design Number
				As viewed from shaft end			
HPV3	120 145	L : Foot Mtg. F: Flange Mtg.	R: Clockwise (Normal) L: Anti-clockwise			K1-Keyed (SAE C) K2-Keyed (no SAE) S1- Splined (SAE C) S2- Splined (no SAE)	10

Note:

1. Design numbers subject to change, but installation dimensions remain as shown.
2. For Nominal Displacement in GPM Refer Table : 1
3. For Cartridge Kit, Refer Table : 2.
4. For Seal Kit, Refer Table : 3
5. For Flange kit, (Optional) Refer Table: 4

Table – 1.

Sl.No.	cm ³ /rev	Flow in GPM (US) @ 1000 rpm	Nominal Displacement GPM
1	120.3	31.77	38
2	145.7	38.48	45

Table – 2 : Cartridge Kit Model Number Designation

CHPV3	-120	-R	-10
Pump Series	Nominal Displacement	Shaft Rotation	Design Number
CHPV3	120 145	R: Clockwise (Normal) L: Anti-Clockwise	10

HPV Series Single Vane Pumps

Table - 3 : List of Seals.

Sl. No	Name of Part	Part Number	Qty
1	'O' Ring	PKH4-0210	1
2	'O' Ring	PKH4-0209	1
3	'O' Ring	PKH4-0208	1
4	Back-up Ring	PKH4-0185	1
5	Oil seal	NOK 232855	1

Table - 4 : Flange Kit Details.

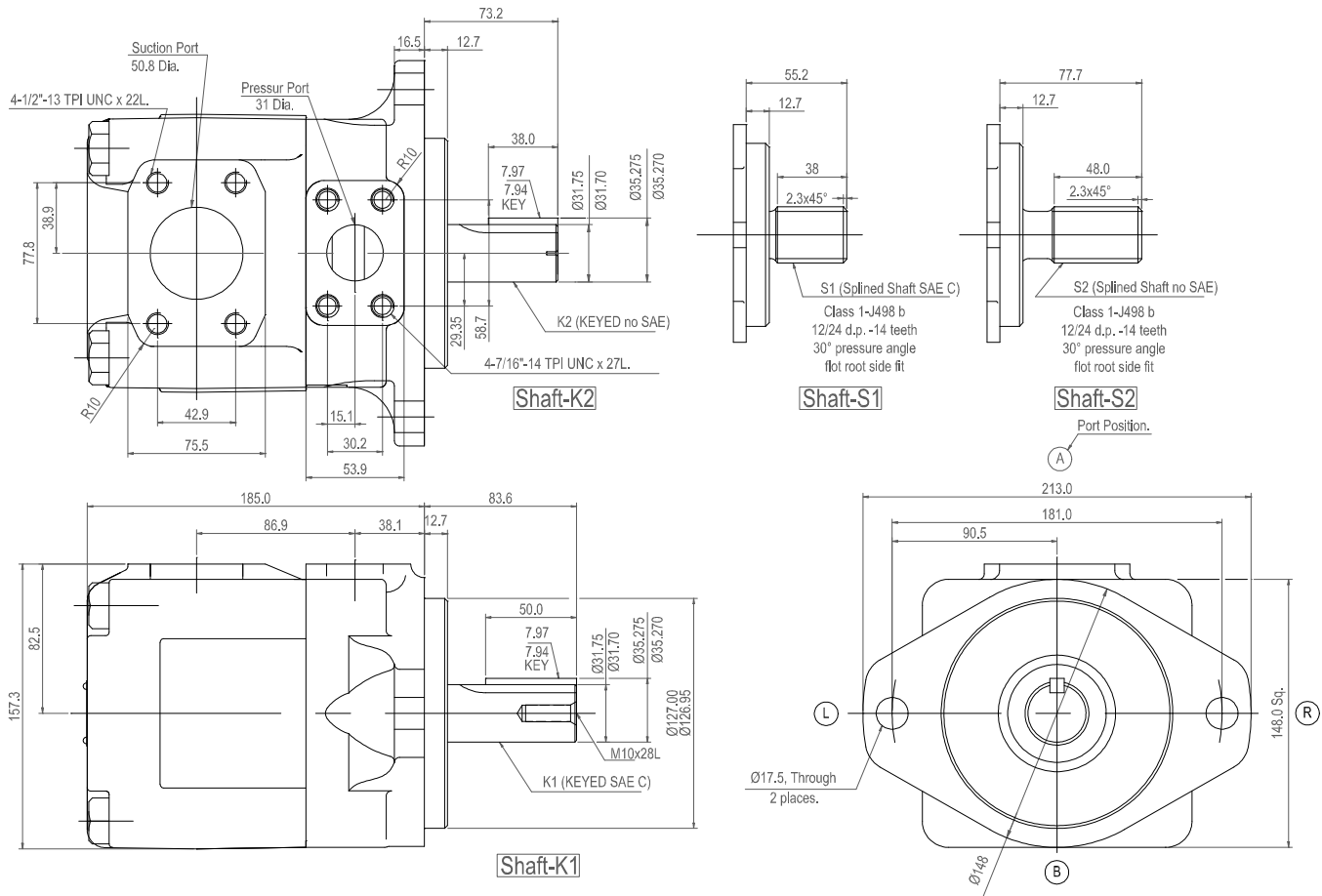
HPV3	-F	-S	-T	-A	-10
Pump Series	Flange	Port	Flange Type	Piping Size	Design Number
HPV3	F	S: Suction Port D: Delivery Port	T: Threaded Flange (SG Iron) W: Welding Flange (MS)	A: 2" B: 1 1/4"	10

B

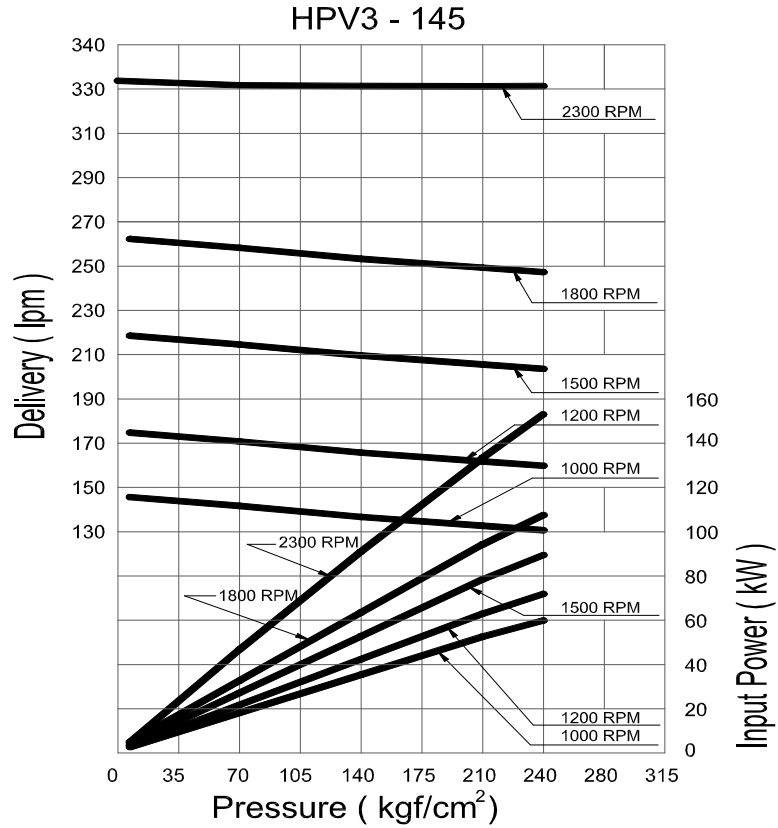
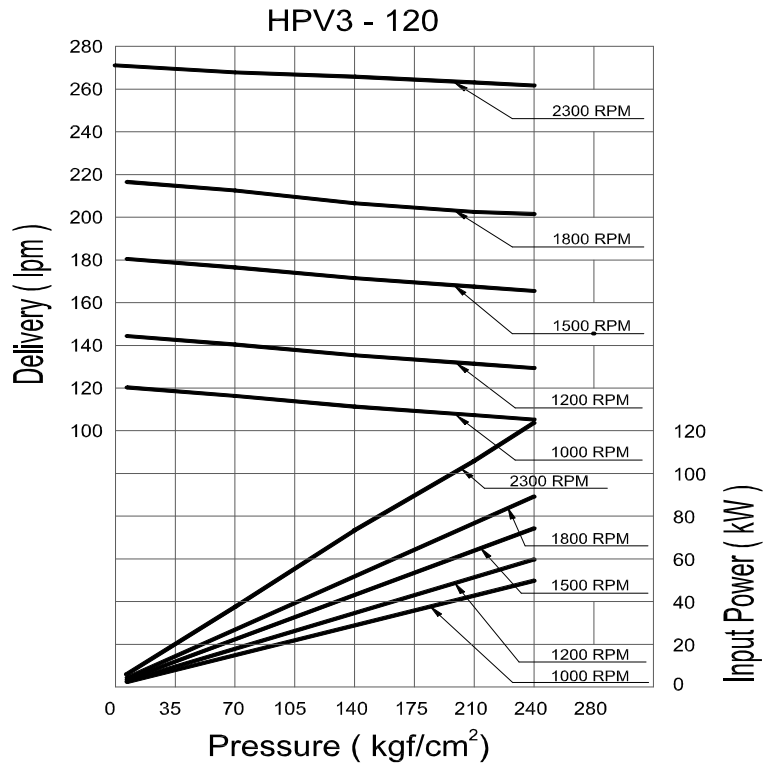
Note: When ordering the seals, the seal kit number KS-HPV3-10 to be specified.

□ Mounting Details- HPV3-*. *.-* * *-10 Flange Mounting

DIMENSIONS IN
MILLIMETRES



Typical Pump Characteristics at viscosity 20 cSt (100 SUS) [ISO VG32, 50°C]

B


HPV Series Single Vane Pumps